

Standard Process Organic Farm

Sustainability Leadership in Challenging Times



Ben Bartlett – Farm Property Manager
January 2023



**Alfalfa
Red Beets
Swiss Chard
Buckwheat
Celery
Hemp
Kale
Collard Greens**

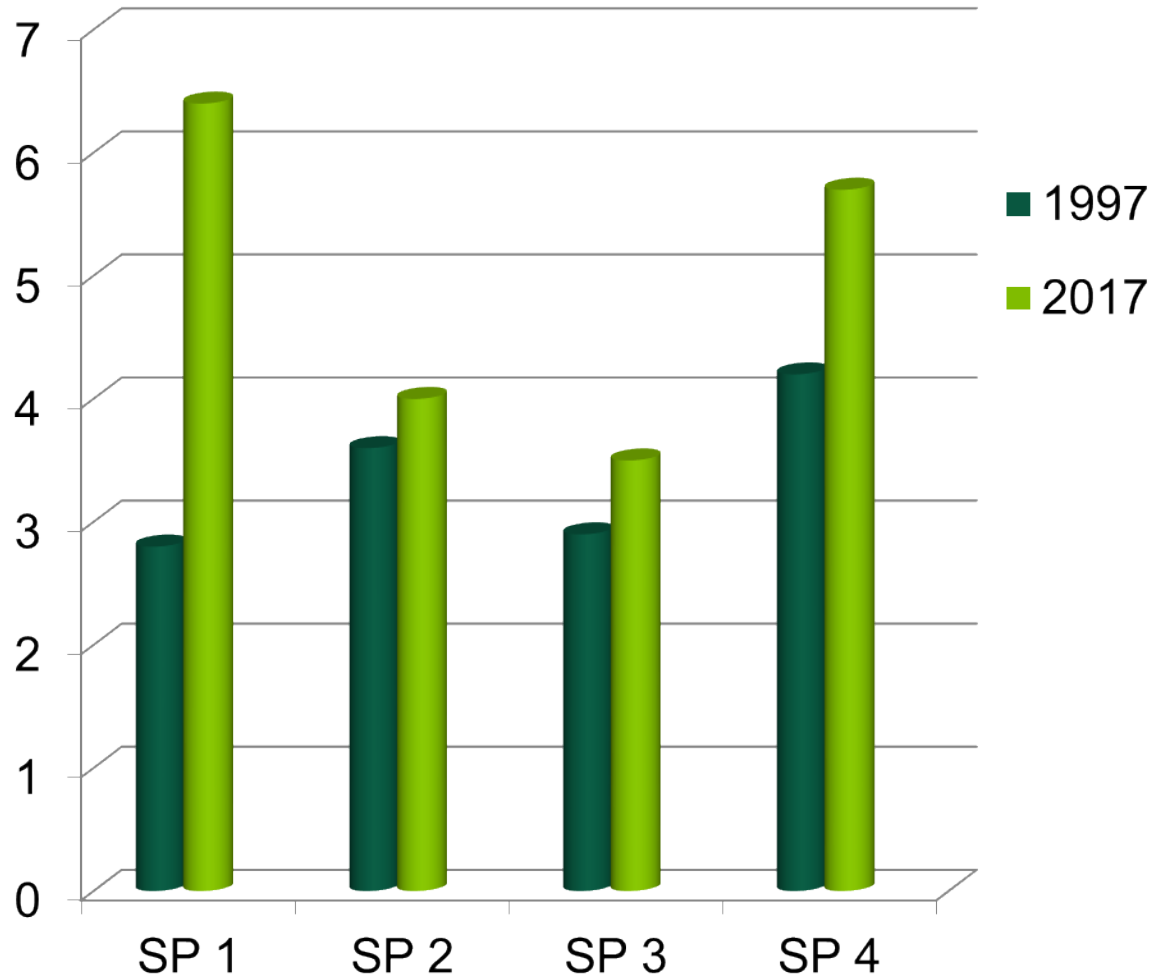
**Kalette
Kidney Beans
Oats
Parsley
Peas
Spanish Black Radish
Brussels Sprouts**

**Barley
Cilantro
Red Clover Flower
Parsley
Turnip Greens
Broccoli
Cover Crops**

**+ DIVERSITY
MATTERS**

Organic Matter Has Grown

Which means more available water



- SP 1 = 90,000 gallons
- SP 2 = 10,000 gallons
- SP 3 = 15,000 gallons
- SP 4 = 37,500 gallons

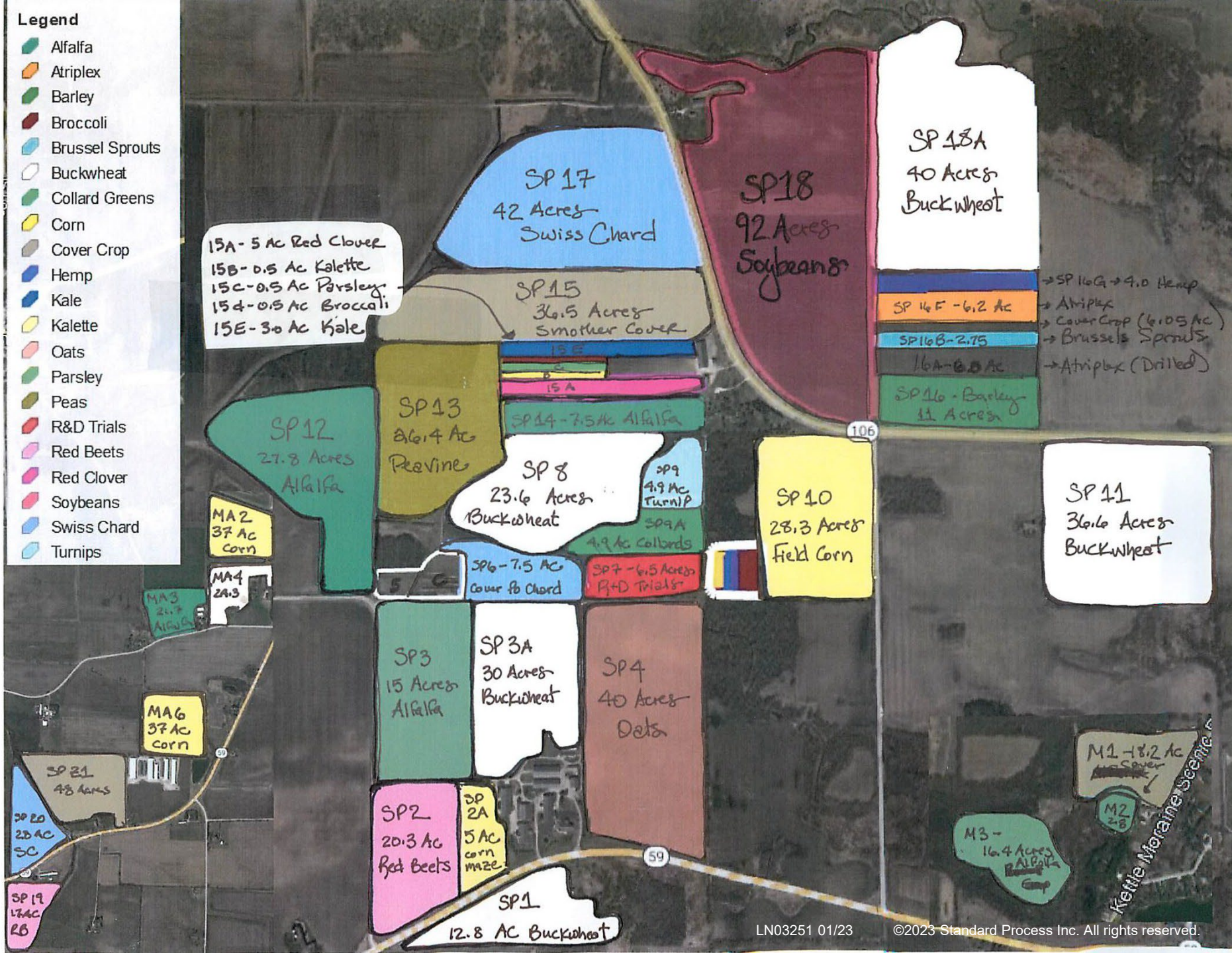
Additional
3,528,000 H₂O
gallons for front
4 fields at SP



2022 Farm Map

868 acres

+ TECHNOLOGY
MATTERS



A photograph of a field of green plants, likely a crop field, with a barn in the background. The plants are arranged in rows, and the barn is a large, white building with a blue roof. The scene is captured in a soft, golden light, suggesting early morning or late afternoon.

9.7 million pounds of harvest

400,000 gallon of extract in the pressroom

1,100,000 # on the drier 900,000# sold off the farm



+ SOIL MANAGEMENT MATTERS

We have upped our game
and more than doubled the
amount of compost
managed and applied on the
farm in 2022



**Thank you from
Wisconsin!**